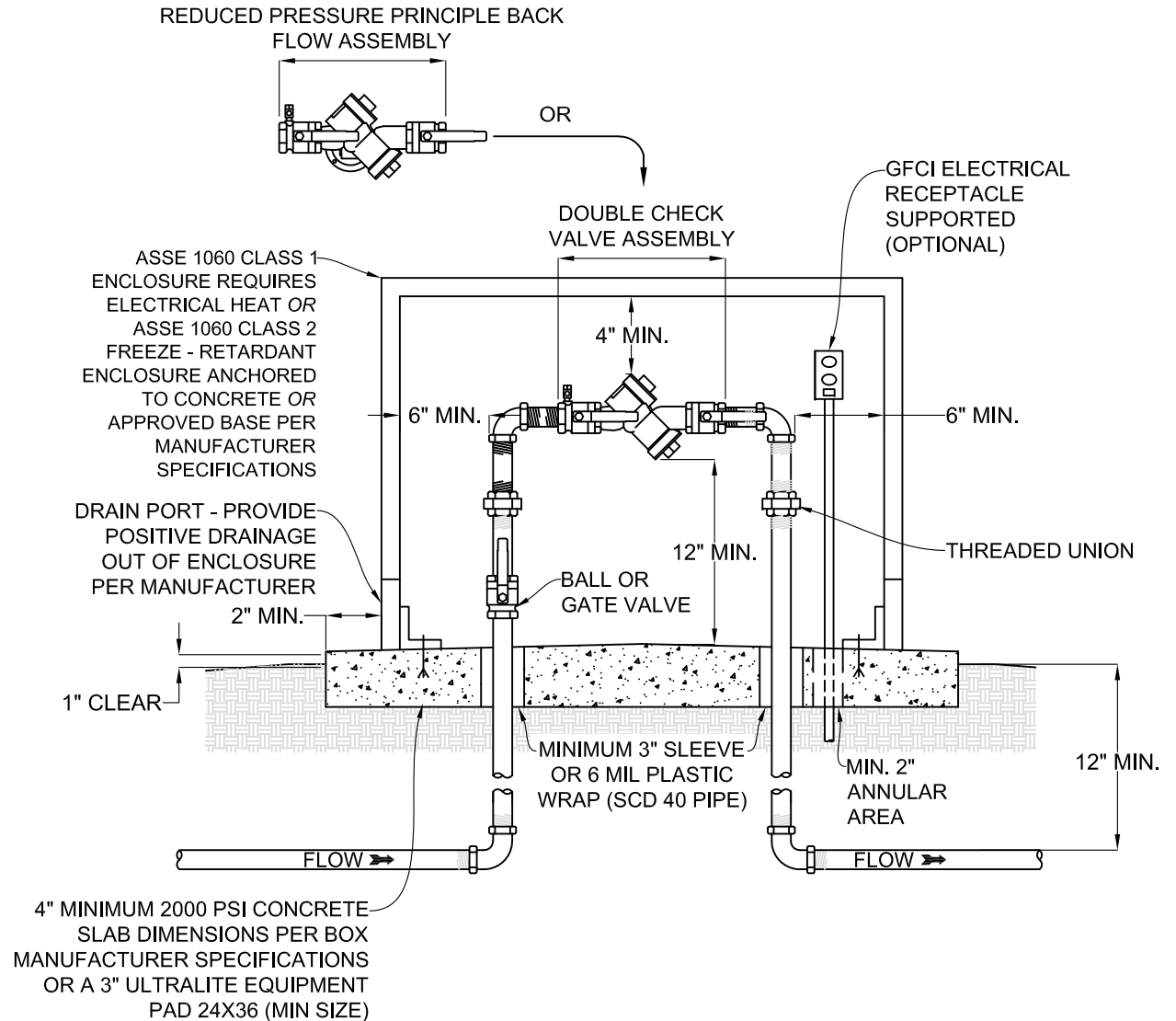


NOTES:

1. REDUCED PRESSURE PRINCIPLE BACKFLOW PREVENTION ASSEMBLY SHALL COMPLY WITH ASSE 1013 & AWWA C511.
2. DOUBLE CHECK BACKFLOW PREVENTION ASSEMBLY SHALL COMPLY WITH ASSE 1015 & AWWA C510.
3. BACKFLOW PREVENTION ASSEMBLY SHALL BE CENTERED ON CONCRETE OR APPROVED BASE PER MANUFACTURER SPECIFICATION.
4. ASSE 1060 CLASS 2 FREEZE-RETARDANT ENCLOSURE - ELECTRICAL HEAT NOT REQUIRED.
5. 120V GFCI ELECTRICAL RECEPTACLE REQUIRED TO BE INSTALLED IN ACCORDANCE WITH THE NC ELECTRICAL CODE FOR OUTDOOR OPERATION WITH ASSE 1060 CLASS 1 ENCLOSURE.
6. PIPE MATERIAL SHALL MEET CURRENT NC PLUMBING CODE TABLE 605.3.
7. INSTALLATION SHALL BE IN COMPLIANCE WITH ALL APPLICABLE TOWN ORDINANCES AND SPECIFICATIONS, USCFCCHR CODE AND THE NC PLUMBING CODE.
8. PROPERTY OWNER SHALL BE RESPONSIBLE FOR MAINTENANCE AND OPERATION OF BACKFLOW ASSEMBLY AND COMPLIANCE WITH REPORTING AND TESTING REQUIREMENTS.
9. ALL BACKFLOW PREVENTERS SHALL MEET CURRENT UNIVERSITY OF SOUTHERN CALIFORNIA FOUNDATION FOR CROSS-CONNECTION AND HYDRAULIC RESEARCH REQUIREMENTS.
10. ALL BACKFLOWS SHALL BE "LEAD FREE".



TOWN OF APEX
STANDARDS

EFFECTIVE: MARCH 6, 2018

**3/4" to 2" COMMERCIAL OUTDOOR BACKFLOW
ASSEMBLY (DOMESTIC SERVICE)**

STD. NO.

620.04

SHEET 1 OF 1